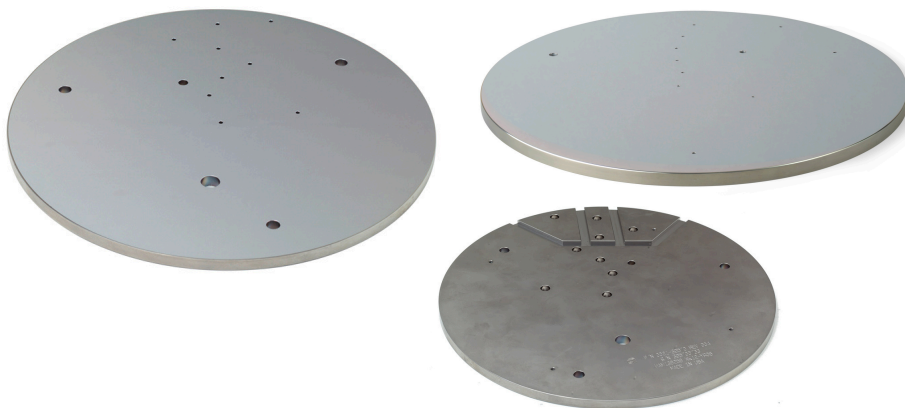


PARTS FOR RAPID THERMAL PROCESSING

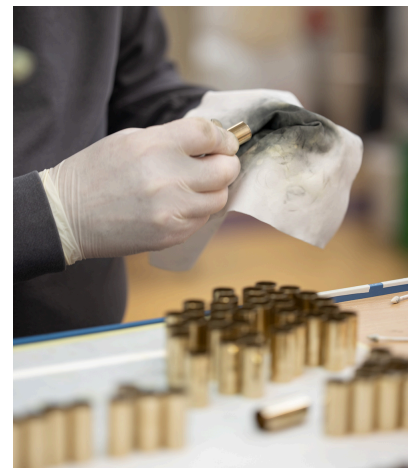
Discover our range of high quality replacement parts, including ball bearings for AMAT XE, sapphire probes, lampheads, gold sleeves and many others. In addition to supplying new components, we specialise in mechanical and chemical refurbishment, RTP recoating and test tool calibration. With our expert services, your remanufactured components will perform like OEM parts - with the same reliability, but with greater sustainability and cost efficiency.

Enhance your RTP equipment with our premium parts and services

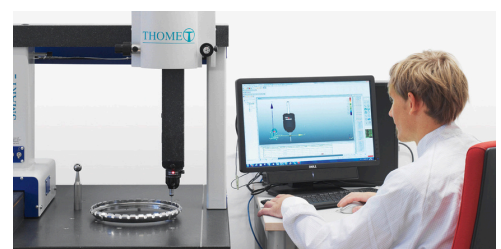
RTP reflector plate refurbishment



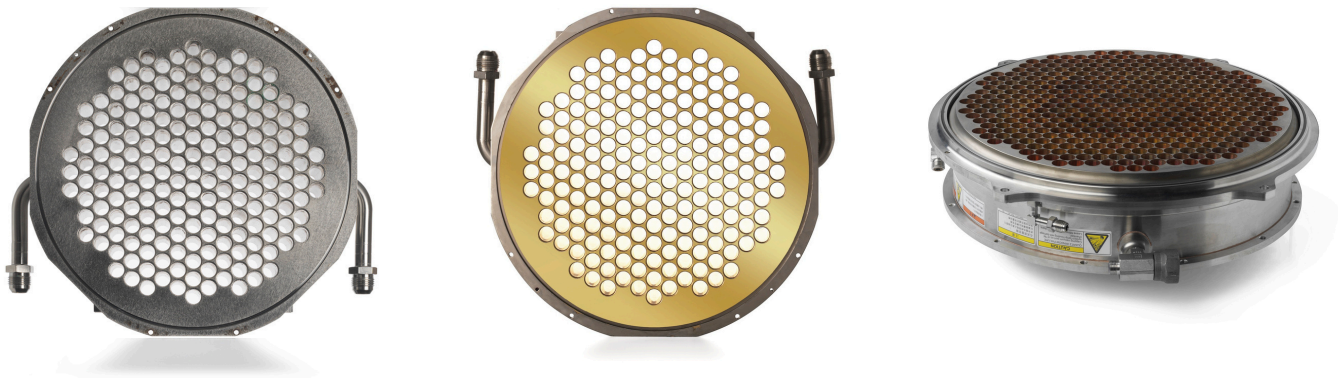
New gold sleeves



New RTP XE race & refurbishment



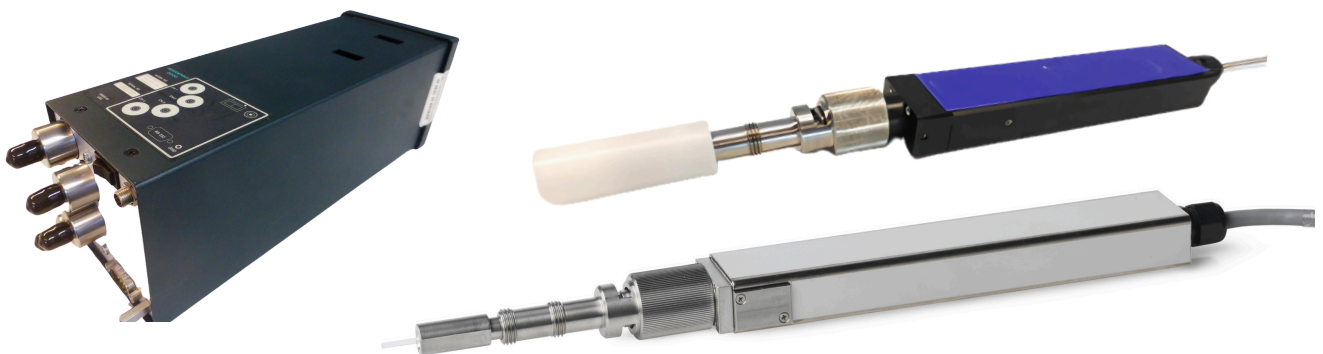
Lamphead refurbishment



Tempmatch tool calibration



Probe repair & calibration



New sapphire probes

